

# LIFE.CHANGES.

## Gardens and Landscape Design

---

Bridgepoint Health's \$60 million *Life.Changes.* campaign includes a \$12 million initiative for gardens and landscape design around the new Bridgepoint Hospital, a 464-bed facility specifically designed for patients who need complex care and rehabilitation.

### Healing doesn't just happen in hospital rooms

Studies have shown that gardens can relieve stress, lower heart rates and increase comfort. Throughout the Bridgepoint Hospital grounds, there will be tranquil garden spaces where patients and community members can enjoy these therapeutic benefits. Walking paths will provide spaces for gentle exercise, while benches will offer quiet areas to rest and visit with friends. Trees and plants will be specially chosen so that the gardens will be beautiful in every season.



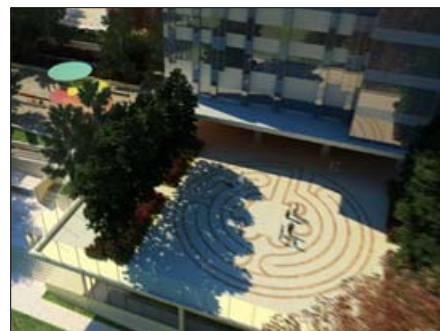
### Beautiful spaces for everyone to enjoy

The publicly accessible grounds of the new Bridgepoint Hospital have been designed to create a lush and healthy outdoor environment that everyone can enjoy. New pedestrian and bike paths will connect Gerrard Street to Riverdale Park. The grounds will include special gardens near the historic Don Jail, highlighting the site's rich heritage. An outdoor labyrinth will offer patients and the public a calm, meditative space for contemplation.



### Restored ecological balance

As a LEED-certified facility, the new Bridgepoint Hospital will incorporate environmentally friendly features and practices, such as using stormwater runoff for irrigating the gardens, and using phosphorous-free fertilizer. The landscaping will also reintroduce native plants, increase the tree canopy and reduce hard surfaces, providing a better habitat for butterflies, bees, birds and other animals.



## **Opportunities for donor support**

There are many opportunities for donor involvement connected with the landscape design of the new Bridgepoint Hospital. These include specific garden areas such as the central court plaza, as well as trees, water features, flowerbeds and furnishings.



[www.lifechanges.ca](http://www.lifechanges.ca)