

# Bridgepoint Hospital Redevelopment Project



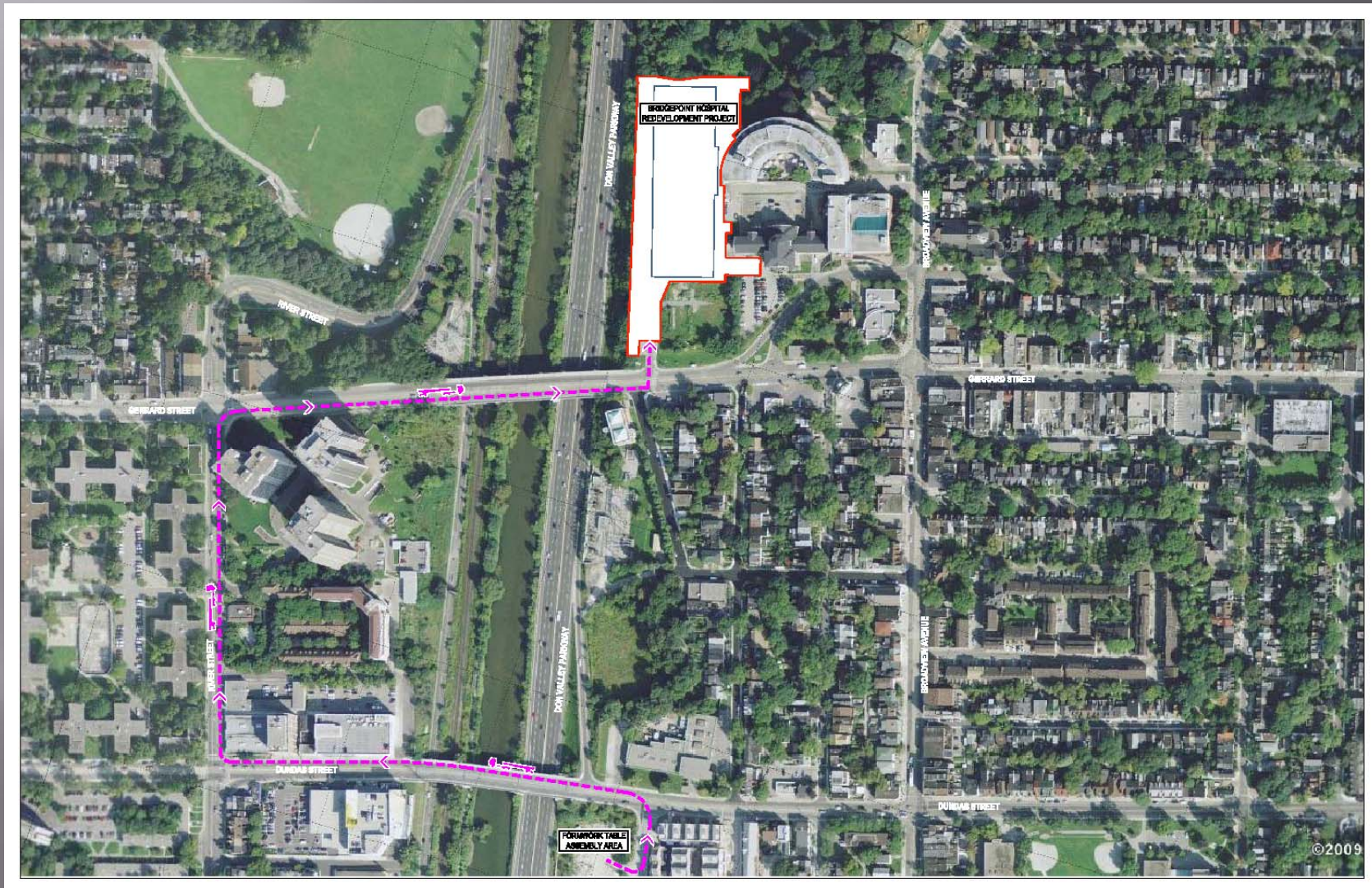
# Construction Update

- ▣ Current Progress
  - Construction of Concrete Structure
    - ▣ P2, P1, Loading and Ground Level Complete
    - ▣ Main Level 30% Complete
    - ▣ Level 2 Slab Formwork Commenced
  - Administration Building
    - ▣ Selective Interior Demolition
    - ▣ Structural Steel Installation

# Construction Update

- ▣ 3 Month Look-Ahead
  - Continue Construction of Concrete Structure above Grade
    - ▣ Transport Slab Formwork Frames to Site
      - 2-3 Times per Week Through February 2011
      - No Impact to Local Traffic
    - ▣ Concrete Slab Completion Dates
      - Level 2 – March 24, 2011
      - Level 3 – April 13, 2011
      - Level 4 – May 5, 2011
      - Penthouse – October 14, 2011

# Slab Formwork Transportation



# Construction Update

- ▣ 3 Month Look-Ahead
  - Administration Building
    - ▣ Selective Interior Demolition
    - ▣ Structural Steel Installation
    - ▣ Pour New Suspended Slabs

# Construction Progress



# Construction Progress

